



PROJECT INFORMATION

PROJECT NAME: LAKE NONA CAMPUS PARKING GARAGE FEASIBILITY STUDY	DATE COMPLETED: AUGUST 26, 2020
PROJECT NUMBER: 18LNC001	PROJECT MANAGER: JAY MALCOLM
SQUARE FOOTAGE: N/A	COST PER SQUARE FOOT: N/A
PROJECT DESCRIPTION: IDENTIFY DIFFERENT OPTIONS FOR THE PARKING AT THE UCF HEALTH SCIENCES CAMPUS IN LAKE NONA INCLUDING A PHASING STRATEGY. STUDY TO INCLUDE, SITE PLANS, SKETCH-UP RENDERINGS, A HIGH LEVEL COST ESTIMATE AND CIVIL ENGINEERING REVIEW.	

PROJECT IMAGES

SITE DATA

Academic Zone

- UCF CoM Building Height: 178,000 SF, 4 Floors
- UCF CoM Building Height: 150,000 SF, 4 Floors
- Total Bldg. Area: 328,000 SF
- PS1 - Parking Structure 1: 843 Cars (G+H)
- Surface Parking: 254 Cars
- Total Parking: 1,099 Cars

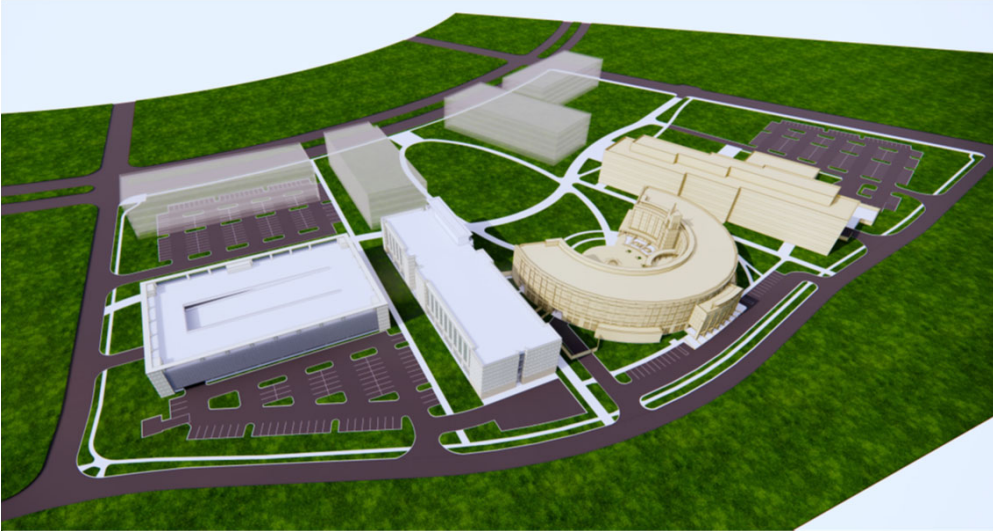
Research Zone

- BSB CoM Building Height: 198,000 SF, 5 Floors
- Total Bldg. Area: 198,000 SF
- Ext. Surface Parking: 191 Cars
- Total Parking: 191 Cars

Overall Totals

- Academic/Research: 526,000 SF
- Overall Total Parking: 1,290 Cars (Provided: 843 Cars (Proposed))

Garage Study Site Plan Phase 1



Technical Memo

PROJECT DESCRIPTION

Phase I - Construction of a new 843-space parking structure on the Academic side of the campus that will include a 254-space parking structure on the Research side of the campus. The new parking structure will be constructed in Phase II of the project.

Phase II - The new building will be constructed on the Academic side of the campus in the phase II parking structure. The new building will be constructed (horizontal) parking, approximately 1,000 spaces, including 843 spaces on the Academic side and 157 spaces on the Research side. The new building will be constructed on the Research side of the campus.

PARKING GARAGE CONSTRUCTION COST ESTIMATE

Phase I - Parking Structure (PS1)

- Capacity: 843 Parking Spaces
- Number of Levels: 2 (G+H)
- Structure: Reinforced Concrete
- Phase: Phase I

Phase II - Parking Structure (PS2)

- Capacity: 1,000 Parking Spaces
- Number of Levels: 2 (G+H)
- Structure: Reinforced Concrete
- Phase: Phase II

Technical Memo

Construction Cost Estimate: \$15,000 - \$17,500 / Space

Signage/Graphics Upgrade Options: \$10 - \$300 / Sq. Ft.

Green Wall Upgrade Options: \$100 - \$300 / Sq. Ft.

PARKING CONTROL EQUIPMENT COST ESTIMATE

- License Plate Recognition (LPR) System: \$15,000 / Lane Installed
- Detector / Camera (LPR Array): \$800 / Lane (if Purchased)
- LPR Software: Existing (Value Security Solution)
- Digital Payment Pay Station: \$10,000 / Lane Installed
- Digital Payment - Visitor Receipt Solutions (Database Interface): \$100,000



PROJECT INFORMATION	
PROJECT NAME: LAKE NONA CAMPUS PARKING GARAGE FEASIBILITY STUDY	DATE COMPLETED: AUGUST 26, 2020
PROJECT NUMBER: 18LNC001	PROJECT MANAGER: JAY MALCOLM
SQUARE FOOTAGE: N/A	COST PER SQUARE FOOT: N/A
PROJECT DESCRIPTION: IDENTIFY DIFFERENT OPTIONS FOR THE PARKING AT THE UCF HEALTH SCIENCES CAMPUS IN LAKE NONA INCLUDING A PHASING STRATEGY. STUDY TO INCLUDE, SITE PLANS, SKETCH-UP RENDERINGS, A HIGH LEVEL COST ESTIMATE AND CIVIL ENGINEERING REVIEW.	

PROJECT COST	
DESIGN COST	\$ 34,017.31
ARCHITECT / ENGINEER / INTERIOR DESIGN	\$ 34,017.31
CONSTRUCTION COST	\$ -
DIVISION 1 - GENERAL REQUIREMENTS (DUMPSTERS, ETC.)	\$ -
DIVISION 2 - EXISTING CONDITIONS	\$ -
DIVISION 3 - CONCRETE	\$ -
DIVISION 4 - MASONRY	\$ -
DIVISION 5 - METALS	\$ -
DIVISION 6 - WOOD, PLASTICS & COMPOSITES	\$ -
DIVISION 7 - THERMAL & MOISTURE PROTECTION	\$ -
DIVISION 8 - OPENINGS	\$ -
DIVISION 9 - FINISHES	\$ -
DIVISION 10 - SPECIALTIES	\$ -
DIVISION 11 - EQUIPMENT	\$ -
DIVISION 12 - FURNISHINGS	\$ -
DIVISION 13 - SPECIAL CONSTRUCTION	\$ -
DIVISION 14 - CONVEYING EQUIPMENT	\$ -
DIVISION 21 - FIRE SUPPRESSION	\$ -
DIVISION 22 - PLUMBING	\$ -
DIVISION 23 - HVAC	\$ -
DIVISION 26 - ELECTRICAL	\$ -
DIVISION 27 - COMMUNICATIONS	\$ -
DIVISION 28 - ELECTRONIC SAFETY & SECURITY	\$ -
DIVISION 31 - EARTHWORK	\$ -
DIVISION 32 - EXTERIOR IMPROVEMENT	\$ -
DIVISION 33 - UTILITIES	\$ -
COMMISSIONING	\$ -
GENERAL LIABILITY	\$ -
GENERAL CONDITIONS (STAFFING, ETC.)	\$ -
CONTRACTOR'S FEE (OVERHEAD & PROFIT)	\$ -
PAYMENT & PERFORMANCE BOND (NOT REQ'D IF UNDER \$100K)	\$ -
INFORMATION TECHNOLOGIES & RESOURCES COST	\$ -
UCF IT	\$ -
OFFICE OF INSTRUCTIONAL RESOURCES (OIR)	\$ -
FACILITIES & SAFETY COST	\$ 1,020.52
BUILDING CODE OFFICE	\$ -
STATE FIRE MARSHALL	\$ -
FP&C PROFESSIONAL MANAGEMENT SERVICES (3%)	\$ 1,020.52
FACILITIES OPERATIONS ALLOWANCE	\$ -
CONSTRUCTION CONTINGENCY (10%, REFUNDED IF NOT USED)	\$ -
TOTAL PROJECT COST	\$ 35,037.83

PROJECT TIME		
START	PROJECT SUBMITTED BY CLIENT	1 MONTH
	SPAA, F&S REVIEW	
	PM ASSIGNED	
	PM CONTACTS REQUESTER	
DESIGN	PM DEVELOPS SCOPE	8 MONTHS
	A/E SELECTED	
	A/E PROPOSAL REVIEW	
	MPP TO CLIENT	
	CLIENT APPROVAL AND FUNDING	
	REQUISITION GENERATED	
	PO ISSUED (NOTICE TO PROCEED)	
	A/E DESIGN	
BID/PERMIT	WORKSHOPS	1 MONTH
	PERMIT REVIEWS	
	S/S PERMIT DRAWINGS REC'D	
	PERMIT SUBMISSION	
	BUILDING CODE OFFICE REVIEW	
	STATE FIRE MARSHALL REVIEW	
	CONTRACTOR WALK-THROUGH	
	CONTRACTOR BID	
	PM REVIEWS BID	
	AVP F&S APPROVAL OF BID	
	PM PREPARES MPP	
	MPP TO CLIENT	
CONSTRUCTION	CLIENT APPROVAL AND FUNDING	1 MONTH
	REQUISITION GENERATED	
	PO ISSUED (NOTICE TO PROCEED)	
	CONSTRUCTION STARTS	
	RFIS, SUBMITTALS, DOCUMENTS	
	PROGRESS REVIEWS	
CLOSE-OUT	PAYMENT APPLICATIONS, INVOICES	1 MONTH
	INSPECTIONS	
	CERTIFICATE OF COMPLETION	
	CERTIFICATE OF OCCUPANCY	
	BENEFICIAL OCCUPANCY BY CLIENT	
TOTAL PROJECT TIME - 10 MONTHS	PUNCH LIST COMPLETION	1 MONTH
	FINAL INVOICES	
	OWNER'S MANUALS	
	ASSET TURNOVER TO OPERATIONS	
ACCOUNTING CLOSE-OUT		